

Song Sparrow PAPERCRAFTS



E-mail: susanfoxbowen@gmail.com

Website: <http://susanfoxbowen.wordpress.com>

Triangle Treat Box Tutorial



Supplies Needed:

Shaded Spruce cardstock
Presents & Pinecones DSP
Christmas Tags & More ephemera

Small Velcro dots
Adhesives
Candy

General Measurements:

Cardstock

7" x 9 3/4"

Score on 7" side at 2" and 5"

Score on 9 3/4" side at 1 3/4", 4 1/4", and 7 1/4"

DSP

2 2 3/8" x 2 7/8" of chosen pattern

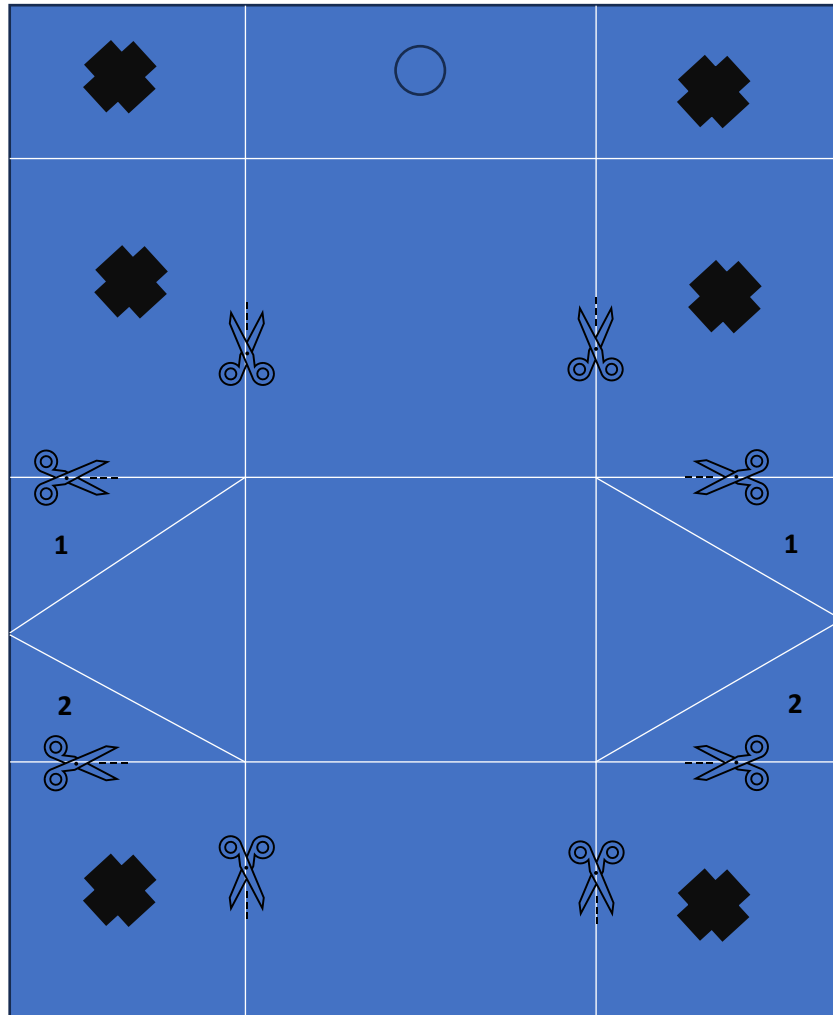
1 1 5/8" x 2 7/8" of chosen pattern

Ephemera

Coordinating image for flap cover

Directions:

1. Cut an 8 ½ x 11 cardstock sheet to 7" x 9 ¾".
2. On the 7" inch side, score at 2" and 5".
3. On the 9 ¾" side, score at 1 ¾", 4 ¼", and 7 ¼".
4. Remove the sections marked with an X as shown below.



5. Fold on all of the score lines.
6. Next, mark the center of the flaps on either side. We will be making the flaps that will hold the box together in its triangular shape.
 - a. Score from the center mark to the corner of the center section of each one, making a triangular shape with the scoring. The triangles will face tip outward.
7. Fold the box together to form the triangle.
 - a. The smallest flap will be the fold-over portion that will adhere with a Velcro dot.
8. Adhere the small triangular flap marked with a **1** to the inside of the box on each side. I used tear-n-tape for a secure hold.

9. Each of the flaps marked with a **2** will fold into the box freely to hold the box contents securely in place.
10. Now you will prepare the decorative paper for the outside of the box.
 - a. Cut 2 pieces of patterned paper to $2\frac{3}{8}$ " x $2\frac{7}{8}$ ". One piece will adhere to the back of the box. One piece will adhere to the bottom flap that folds up to adhere to the small flap with Velcro. Be sure the patterns run the appropriate direction before you adhere them to the box.
 - b. Cut 1 piece of patterned paper to $1\frac{5}{8}$ " x $2\frac{7}{8}$ ". This piece will adhere to the top flap that folds down to adhere to the bottom flap with Velcro.
11. Select ephemera or other decorative elements to dress up the front of the box and overhang the small flap.
12. Stuff the box with treats. Hershey Nuggets, Ghirardelli squares, Lindor truffles, and Hershey Kisses all fit well in this box.

Watch this great video tutorial by The Paper Pixie if you're a visual learner!

<https://thepaperpixie.com/2017/09/triangular-treat-box.html>