

# Song Sparrow PAPERCRAFTS



E-mail: [susanfoxbowen@gmail.com](mailto:susanfoxbowen@gmail.com)

Website: [songsparrowpapercrafts.com](http://songsparrowpapercrafts.com)

## Pinch Flat Top Box Tutorial



### Supplies Needed:

Pool Party cardstock  
Wildflower Birthday DSP  
Wildflower Birthday pieces


Gold striped sheer ribbon  
Velcro dots  
Adhesives

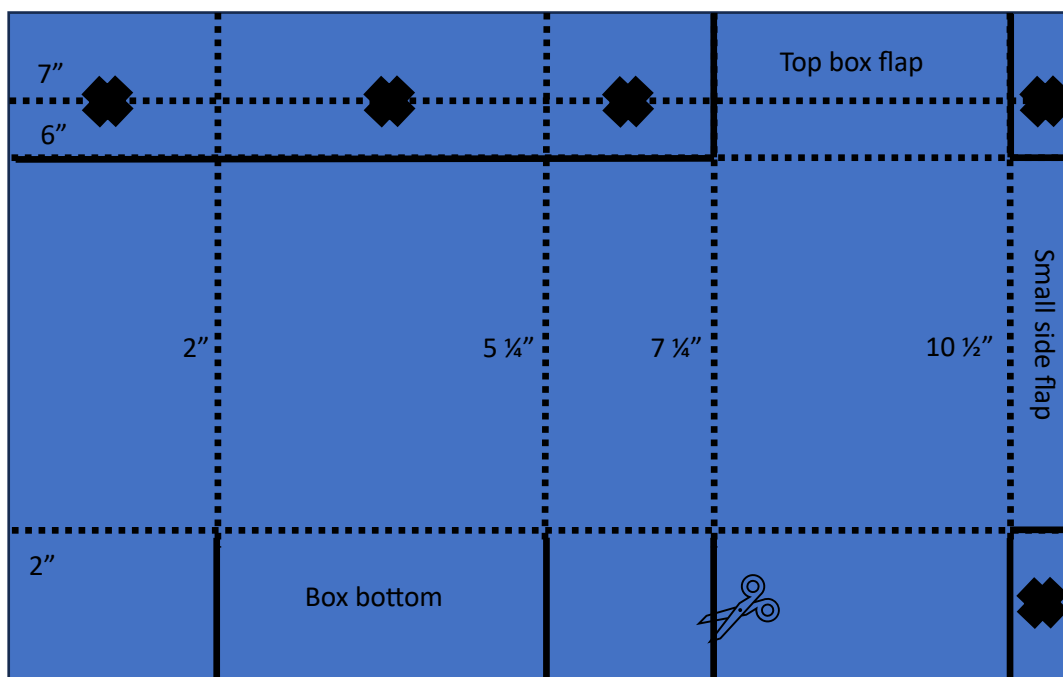
### General Measurements:

Box base  
Wildflower Birthday 1  
Wildflower Birthday 2 (lid)

8 ¼" x 11" Pool Party cardstock  
3" x 3 ¾" (x 2)  
2 ¾" x 3"

## Directions:

1. Cut Pool Party cardstock 8 ¼" x 11".
2. With the long edge on top, score at 2", 5 ¼", 7 ¼", and 10 ½".
3. With the short edge on top, score at 2", 6", and 7".
4. Remove the panels that are marked with an  below.
5. Fold on all score lines.
6. Cut between the flaps marked by solid lines below.
7. Fold the flaps together to form the box. Adhere the bottom of the box first, followed by the small side flap.



8. Pinch the two sides of the box together at the top. Fold down the top flap of the box. The top flap will be flat on the top and the remainder will fold over the front of the box. If desired, round the corners of the fold-over flap on the front.
9. Select the Wildflower Birthday DSP for the top of the box. Cut a 2 ¾" x 3" square and adhere to the top flat top. NOTE: if you rounded the corners of the box flap, ensure that you round the corners of the portion of the DSP that will adhere to that flap.
10. Select the focal Wildflower Birthday DSP for the front and back of the box. Cut two panels measuring 3" x 3 ¾". Adhere to the front and back of the box.
11. Make a bow using the gold striped sheer ribbon. Set aside.
12. Choose decorative elements from the Wildflower Birthday shape page. Arrange and then adhere to the front of the box flap.
13. Affix the bow on top of the decorative elements.
14. Finish the box by adding a set of Velcro dots on the inside of the flap to keep the treat box closed. Fill with treats or a gift!