

Song Sparrow PAPERCRAFTS



E-mail: susanfoxbowen@gmail.com

Website: <http://susanfoxbowen.wordpress.com>

Simple Angled Gatefold Card



Supplies Needed:

Peach Pie, Basic White cardstock
Toadstool Gardens DSP (SAB)
Three color glimmer SP
With You in Mind stamps
Fresh Freesia ink

Spotlight on Nature, Nested Essentials dies
Fresh Freesia seam binding ribbon (SAB)
Shiny sequins
Dimensionals
Adhesives

General Measurements:

Card base

5 1/2" x 11" Night of Navy cardstock
scored at 3 3/8" and 7 5/8"

Toadstool Gardens DSP

3 5/8" x 5 1/2" (x2) (card front)
3 5/8" x 5 1/2" (x2) (inside card)(optional)

Shimmer SP

2 1/2" x 4 1/2"

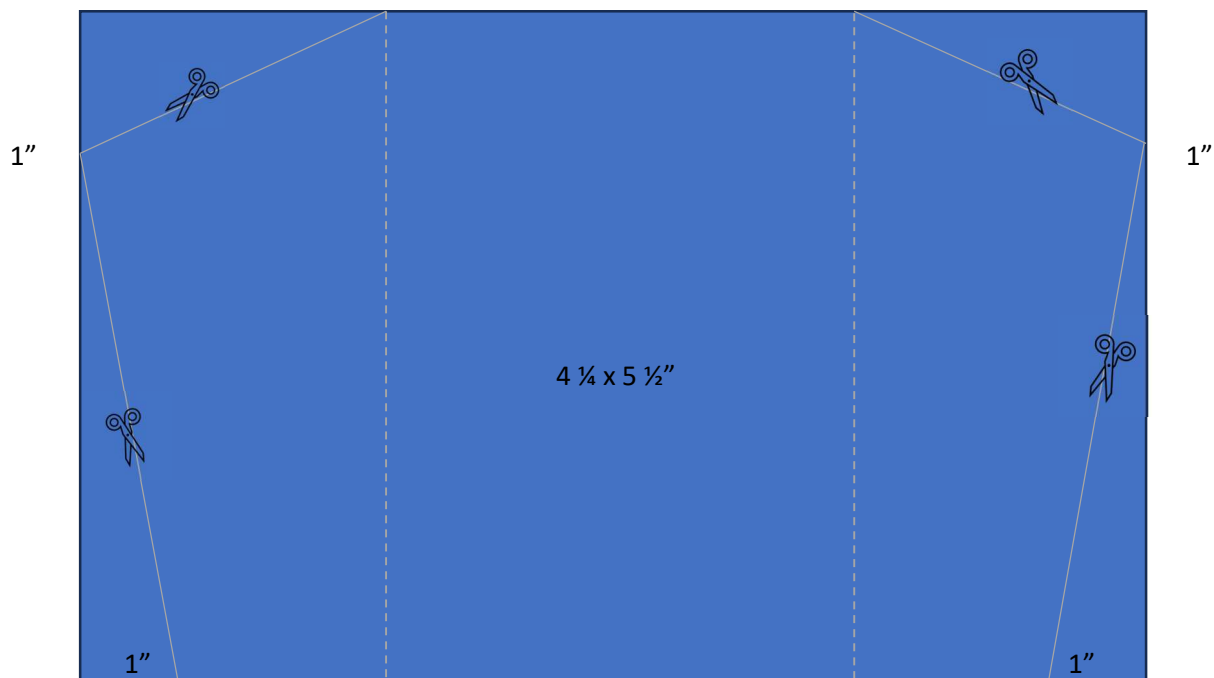
3 1/2" x 3 1/2"

Inside sentiment panel

4" x 5 1/4" Basic White cardstock

Directions:

1. Cut Peach Pie cardstock $5\frac{1}{2}" \times 11"$. Score at $3\frac{3}{8}"$ and $7\frac{5}{8}"$. When folded, the center panel should be $4\frac{1}{4}" \times 5\frac{1}{2}"$.
2. With the long edge of the cardstock down, make a pencil mark at 1" from the left edge and make a pencil mark at 1" from the right edge. The marks should be on the long edge and be mirrors on each side.
3. With the short edge of the cardstock down, make a pencil mark at 1" from the right edge on the bottom and make a pencil mark at 1" from the right edge at the top. The marks should be on each short edge and be mirrors on each side.
4. Cut between the score line and the 1" mark on the short side for each side of the card.
5. Now cut between the top 1" mark and the bottom 1" mark to create the angled panel on each side of the front panel. See the graphic below.



6. Choose the patterns of Toadstool Gardens DSP you wish to use for the front panels of the card. Cut each pattern to $3\frac{5}{8}" \times 5\frac{1}{2}"$. Adhere each patterned piece of paper to the front panel and then trim the overlapping excess.
NOTE: I chose to machine emboss the purple striped sheet with the Birch Wood embossing folder. To bring out the embossing, I rubbed a Fresh Freesia ink pad lightly over the top of the embossed panel to ink the ridges of embossing.
7. If desired, affix decorative paper on the inside angled panels of the card.
8. Using the middle-sized Spotlight on Nature die, cut a circle from the Petal Pink glimmer paper.
9. Using the middle-sized Nested Essentials die, cut a long hexagon from the Fresh Freesia glimmer paper.
10. Adhere Fresh Freesia seam binding ribbon to the back of the Fresh Freesia panel with tear-n-tape and then adhere to the circle panel with additional tear-n-tape.

11. Stamp the sentiment from With You in Mind in Fresh Freesia on white cardstock and then cut around it using paper snaps.
12. Apply dimensionals to the back of the sentiment and adhere to the glimmer panels. You may want to use several layers of dimensionals to ensure the sentiment stands proud on the full panel.
13. Apply dimensionals to the back of the sentiment panel, ensuring that none are on the portion that will overlap the right-side flap of the card front, and adhere to the center of the left flap.
14. Embellish with shiny sequins as desired.